



School Information Management System

HOME

STUDENTS

TEACHERS

ACTIVITIES

GALLERY

LIBRARY

CONTACT



Username

Password

Submit



Developed by PERI



School Information Management System

Education is the single most important part of anyone's life. The last few years have seen fundamental changes taking place in school education. A rapid development and versatile use of the Web requires appropriate means for presenting both school management process and learning process. **PERI** iGuru is a comprehensive web-based school management solution developed with the aim of addressing the need of current day educational system demands. It integrates the A to Z of school operations and seamlessly interconnects all facets of the school functions to offer optimal efficiency and easy day-to-day management. iGuru also provides an option to integrate smart-boards and thereby enabling a platform for e-learning.

With the growth of the Internet and the culture of “net speak”, the forums and avenues available on the **PERI** iGuru portal will prove an effective tool in educating students on “netiquette”. iGuru maintains all the information of a school in a centralized database and allows each stakeholder (principal, teachers, students, parents, front-office, etc) to view relevant information from anywhere at anytime.

iGuru Advantages

	Current Scenario	iGuru Advantages
Management	<p>Lack of timely and relevant information about:</p> <ul style="list-style-type: none"> Student & Staff performance Budgeting and allocation of resources Management issues 	<p>Enables timely, accurate, usable information about:</p> <ul style="list-style-type: none"> School, Staff and Student Performance and Demographic Information. for a school or group of schools Allocated resources, set benchmarks and monitor Reduce staff and hardware cost of managing data in paper format
Faculty	<p>A great deal of time and effort is spent on : Assimilation of Attendance & grading data</p> <p>Collection and dissemination of information to students/ parents about other activities in the school</p> <p>No direct line of communication with parents except PTA meetings</p>	<p>Reduces overheads of assimilation and calculation of grade averages/class rankings</p> <p>Online attendance, online posting and submission of homework, assignments</p> <p>Faster and easier communication with parents regarding child's performance and conduct</p>
Parents	<p>Lack of timely information and close involvement in their child's development</p> <p>Busy schedule and lack of direct line of communication with teachers</p>	<p>Access child's information online whenever, wherever at their convenience and can contribute in a positive, supportive way</p> <p>Greater ease of direct communication with teachers No need to wait for monthly/ quarterly PTA Meeting</p>
Students	<p>Unable to keep track of current performance</p> <p>Non availability of ready information regarding assignments, grades, etc</p> <p>Lack of one to one interaction with teachers during non school hours</p>	<p>Reduces the stress level by enabling them to keep constant track of their performance</p> <p>Option to get all their assignments, tests, grades, homework online</p> <p>Forum and internal email helps in increased interaction and support from faculty & parents on a timely basis</p>

Academic Module

- Class and Faculty Timetable
- Curriculum / Syllabus Management
- Online Assignment, Homework & Test
- Bulk emails and Messaging
- On Line Forum
- Smart Boards Integration
- Student Report Cards
- Circulars

Administrative Module

- Student Information Management
- Staff Information Management
- Leave & Attendance Management
- Staff Payroll Management
- Fees Collection and Management System
- Document Management System
- Customized Analysis and Reports
- Role Based Access

Value Added Solutions

- Library Management System
- Asset Management System
- Centralized Information for Chain of schools
- Data Entry Assistance
- School Website Design & Maintenance
- Computer Lab Set-up and Maintenance
- Smart Cards for students and staff
- Cashless Campus
- RFID/Finger Print based attendance system





School Information Management System



Administrative Module

Leave & Attendance Management

- Absence records including date, time and reason of student and staff
- Class-wise absence records
- Cumulative year/term end attendance record for student and staff
- Reports and Analysis at the end of the term

Staff Payroll Management

- Manage salary components, deductions, leave, PF, any other allowances, etc of all the employees
- Staff can access information on their salary breakups, leave balance
- Automate processing of staff's monthly Payroll

Student Information Management

- Personal Details, Medical History, Photo, Contact Details, etc
- Data displayed is controlled by the user-defined role within the system
- Provides an easy to use search function that allows for quick look-ups of student's information

Staff Information Management

- Personal Details, Educational Qualifications, Work Experience, etc
- Data displayed is controlled by the user-defined role within the system
- Provides an easy to use search function that allows for quick look-up of Staff information

Fees Collection and Management System

- Keeps track of all the credits through out the year
- Ability to enter payment details, alerts for upcoming fee payments, etc
- Alert mechanism for parents

Customized Analysis and Reports

- Multiple reports available all the time like Current Average, Current attendance Status, Class Rankings etc
- Students' demographic report
- Provides an easy to use search function that allows for quick look-up
- Comparison reports of student performance with public exam results (eg. Class X and Class XII)

S.No	Admission No	Students	Forenoon	Afternoon
1	AdNo36	F Ibrahim	<input type="checkbox"/>	<input type="checkbox"/>
2	AdNo227	G Gopal	<input type="checkbox"/>	<input type="checkbox"/>
3	AdNo110	S Elizabeth	<input type="checkbox"/>	<input type="checkbox"/>
4	AdNo 223	S Sumanth	<input type="checkbox"/>	<input type="checkbox"/>
5	AdNo888	Z Zein	<input type="checkbox"/>	<input type="checkbox"/>
6	AdNo333	D Godwin	<input type="checkbox"/>	<input type="checkbox"/>
7	AdNo 225	H Suman	<input type="checkbox"/>	<input type="checkbox"/>
8	AdNo 665	A Prasad	<input type="checkbox"/>	<input type="checkbox"/>

Term	Shanker	G
1st Term	431	343
Quarterly	419	312
2nd Term	275	253
Half Yearly	379	231



School Information Management System



Academic Module

Class and Faculty Timetable

- Dynamic timetable of students and faculty
- Parents are able to see the student's timetable online
- Ability to search for available teachers, classrooms

Curriculum / Syllabus Management

- Complete details of the syllabus of a course
- Digital repository of lessons/courses linked to various classes
- Allows a teacher to dynamically add content to a class

Smart Boards Integration

- Provision of smart boards, laptops, projectors for the classroom
- Backup of content in central data server
- Online access of content by students, parents

Online Assignment & Homeworks

- Ability to post online assignments and homeworks on the web and create digital repository
- Students can submit homeworks, assignments online

Student Report Cards

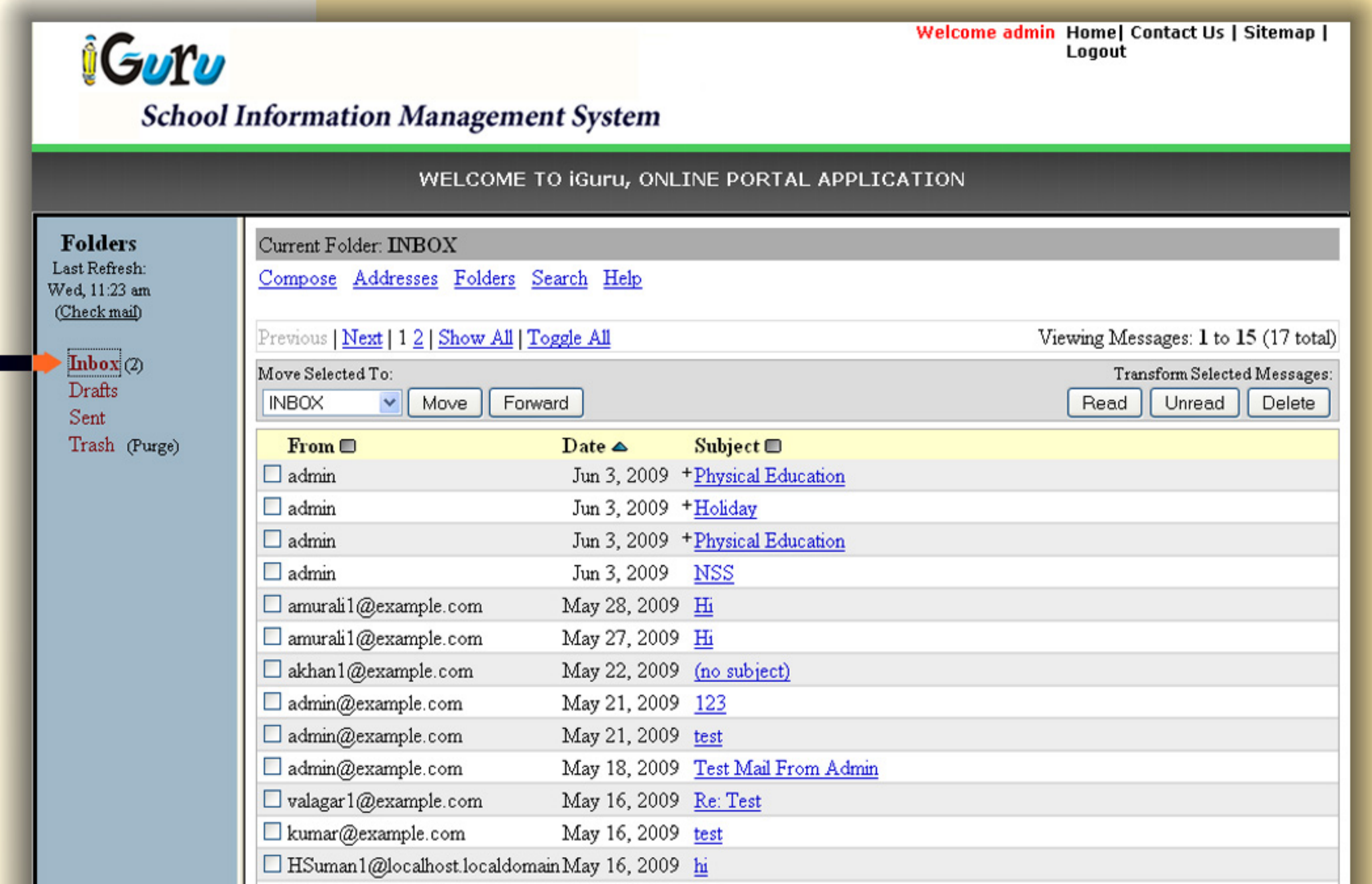
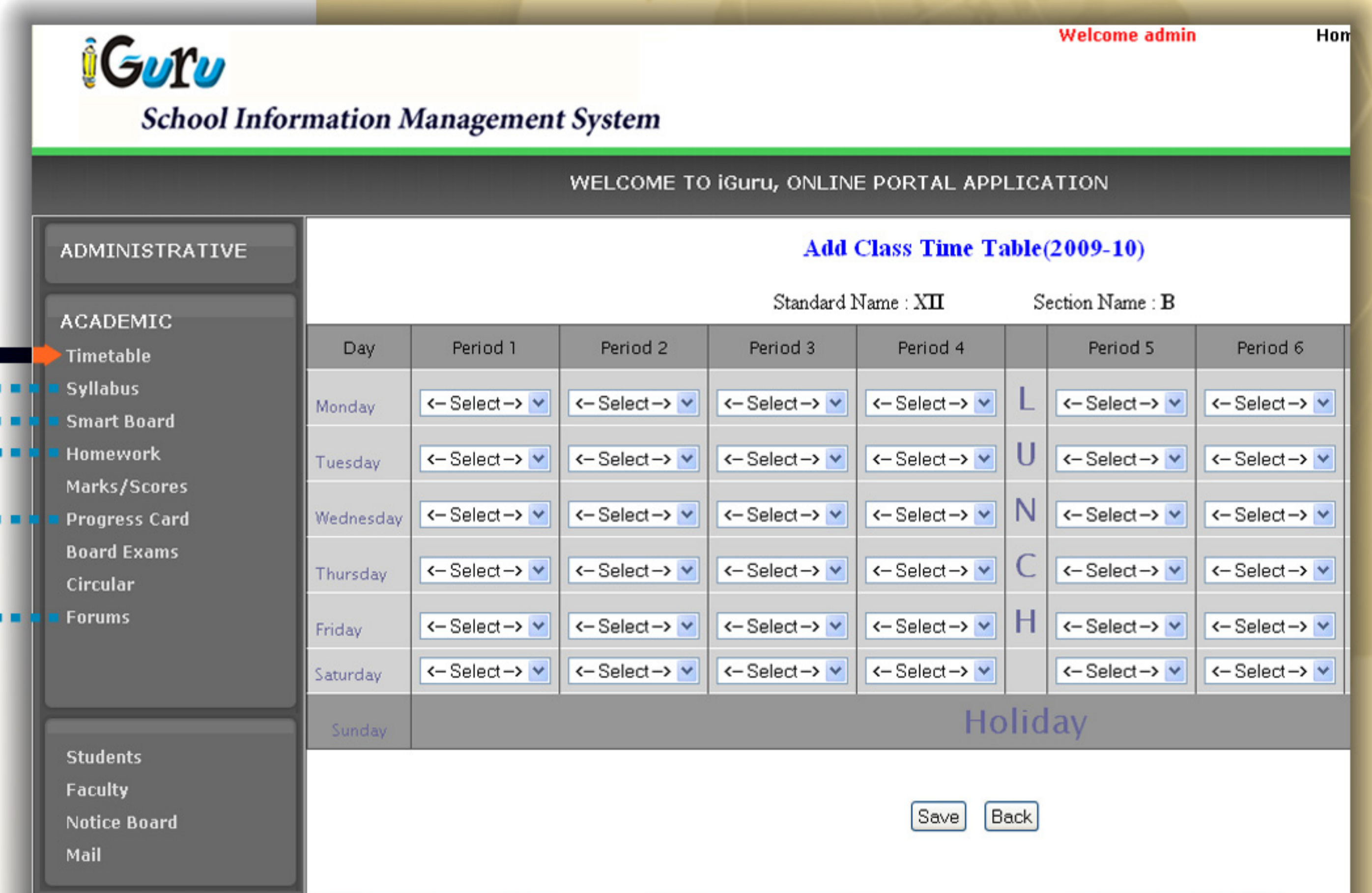
- Online Term/Year end report card of students
- Electronic Report cards emailed to students and parents

On Line Forum

- Helps improve interaction between parents and teacher
- Opportunity for forming new net groups like fathers club, mothers club, groups with common interests, hobbies

Bulk emails and Messaging

- Simple e-mail interface to send/receive messages to all or group of students/parents in the form of sms or email





School Information Management System

Value Added Solutions

Library Management System

- Catalogue of books with Serial No, Author, Title, Publisher, Number of copies etc
- Librarian is provided with an interface to issue/return a book to/from a person
- Search for availability of a book
- Online personal library account information of any user – students, teachers
- System alerts the user when a book is due for return or is already late
- Various system generated reports e.g books due this week, late returns, etc
- Module to calculate penalty for late returns

Asset Management System

- Manages all assets of the institute e.g chairs, tables, computers, etc
- Maintains a list of vendors who supply items to the institute
- Reports on depreciation, shortages, total purchases made during a period, etc

Centralized Information for Chain of schools

- Centralized information available to higher management about all the institutes in group
- Various reports to compare different schools/staff/students in the group
- Report on budgetary allocation and annual expense

Data Entry Assistance

- Full-Time data entry operators at the site/off-site based on the requirement of institute
- Data entry operators to collect and feed data into the system

School's Website Design & Maintenance

- Website design, annual maintenance and integration with iGuru
- Institute email accounts to various stakeholders

Computer Lab Set-up and Maintenance

- Setting up new computer lab or upgrading existing lab
- Entire hardware for the lab (PC/Laptop, network, printers) installation and maintenance

Smart Cards for students and staff

- Can be used as identity card by student
- Card can store and retrieve all information regarding the student
- Attendance and access control can be enabled through the card





School Information Management System



Please register for a free demo at perisoftware.com/iguru

PERI

570, Broad Street, Newark, NJ - 07102

Tel : 973 735 9500

E-mail : iGuru@perisoftware.com

URL : perisoftware.com/iguru

